

SKYRIDGE THEATRE

PRESENTS

Disney

# FROZEN

THE BROADWAY MUSICAL

©Disney



Nov 9-20

OPEN NIGHT: NOVEMBER 9, 2023

SKYRIDGE THEATRE

presents

Disney  
**FROZEN**  
THE BROADWAY MUSICAL

Music and Lyrics by  
**KRISTEN ANDERSON-LOPEZ & ROBERT LOPEZ**

Book by  
**JENNIFER LEE**

Originally directed on Broadway by  
**MICHAEL GRANDAGE**

Based on the Disney film written by Jennifer Lee  
and directed by Chris Buck & Jennifer Lee

Originally produced on Broadway by  
Disney Theatrical Productions

Starring

MIA SCHOEBINGER ELLIE SABIN ETHAN ETRINGER CARSON LONG CALEB SOUTHWICK OLIVER HUDSON JAYDEN PONT  
GABE WALTER TYLER ANDERSON KAMILLE ANDERSON GEORGIA SWOGGER IZZY BROWN MARSHALL BARRUS  
MATISYN JOHNSON JAXON ARBON JOSEPH D'ARGY MARK URSIC LIESEL CHIPMAN LUCY JOHNSON

Music Director  
KIRSTEN RICHARDS

Orchestra Director  
CHIP BROWN

Costume Design  
RAMONA BROWN

Stage Manager  
MADDIE CARDON

Lighting Design  
ANDREW HALLS

Sound Designer  
SHAYLIN GUEVARA

Set Design  
MICHAEL CARRASCO  
JENNIFER SHOEBINGER

Puppet Design  
LJ JONES  
CRYSTAL PYNE

Hair Design  
AMY GOADE, CHELSEY BEAN  
& BETSY LONG

Marketing Director  
HEATHER NEWALL

Projection Design  
ANDREW HALLS

Choreography

**KIRSTEN RICHARDS**

Director

**JOHN BROWN**

Original Broadway Orchestrations by  
DAVE METZGER

Original Broadway Music Supervision and Arrangements by  
STEPHEN OREMUS

Additional Broadway Dance Arrangements by  
DAVID CHASE

# ❧ Cast ❧

<b>MIA SCHOEBINGER</b>	_____	<b>Anna</b>
<b>ELLIE SABIN</b>	_____	<b>Elsa</b>
<b>KAMILLE ANDERSON</b>	_____	<b>Young Anna</b>
<b>GEORGIA SWOGGER</b>	_____	<b>Young Elsa</b>
<b>IZZY BROWN</b>	_____	<b>Queen Iduna</b>
<b>MARSHALL BARRUS</b>	_____	<b>King Agnarr</b>
<b>GABE WALTER</b>	_____	<b>Pabbie</b>
<b>MATISYN JOHNSON</b>	_____	<b>Bulda</b>
<b>JAXON ARBON</b>	_____	<b>Bishop</b>
<b>CALEB SOUTHWICK</b>	_____	<b>Hans</b>
<b>OLIVER HUDSON</b>	_____	<b>Weselton</b>
<b>ETHAN ETRINGER</b>	_____	<b>Kristoff</b>
<b>TYLER ANDERSON</b>	_____	<b>Sven</b>
<b>CARSON LONG</b>	_____	<b>Olaf</b>
<b>JAYDEN PONT</b>	_____	<b>Oaken</b>
<b>JOSEPH D'ARGY &amp; MARK URSIC</b>	_____	<b>Weselton's Guards</b>
<b>LIESEL CHIPMAN &amp; LUCY JOHNSON</b>	_____	<b>Handmaidens</b>



## DISNEY'S FROZEN

Is presented through special arrangement with Music Theatre International (MTI).

All authorized performance materials are also supplied by MTI

[www.mtishows.com](http://www.mtishows.com)

Any video and/or audio recording of this production is strictly prohibited.

The  
**Lehi  
Free  
Press**  
supports

# SKYRIDGE Theatre

*Lehi Free Press*

**PRINT  
EDITION**



**EMAIL  
NEWSLETTER**



Support Lehi news, subscribe today!

# 🌿 Technical Crew 🌿

## Stage Manager

MADDIE CARDON

## Assistant Stage Manager

KAITLYN HALLS

## Fly Operators

RORICK RODGERS, LUKE CHILDS  
& BRYTON HARRIS

## Prop Masters

LUKE CHILDS & BRYTON HARRIS

## Stagehands

SAM HALLS, BRONSON WYATT, FINN OLLIVIER,  
BAILEY ROBINS & MAX HOLGREEN

## Sound Designer/Operator

SHAYLIN GUEVARA

## Sound Assistants

ETHAN HAYES, AMIE BURBIDGE  
& LYSSA JOHNSON

## Runner

BRANDON SANDERSON

## Lighting Designer/Operator

ANDREW HALLS

## Spotlight Operators

HADLEY HARRIS  
& MADDIE PHAUNN



# 🌿 Production Team 🌿

## Director

JOHN BROWN

## Choreography

KIRSTEN RICHARDS, ERICA SCHOEBINGER

## Set Design

MICHAEL CARRASCO, JENNIFER SCHOEBINGER

## Set Construction

JENNIFER SCHOEBINGER, MICHAEL CARRASCO,  
CHRIS D'ARGY, CAST & CREW

## Puppet Design

LJ JONES, CRYSTAL PYNE

## Costume Assistants

RACHEL SWOgger, SHANNON HARRIS

## Makeup Assistant

NAOMI FROST

## Photography

JESSALYN BATT

## Front of House

HEATHER NEWALL

## Concessions

BECKY JONES

## Music Director

KIRSTEN RICHARDS

## Orchestra Director

CHIP BROWN

## Costume Design

RAMONA BROWN

## Marketing

HEATHER NEWALL

## Projection Design

ANDREW HALLS

## Sound Advisor

MITCH BROWN

## Hair & Makeup

AMY GOADE, CHELSEY BEAN & BETSY LONG

## Wig consultant

PHOENIX PARK

## Videography

JEFF BATT

## Publicity

KAT FULLER

## Box Office

BRITT BROWN

# ❄️ Director's Note ❄️



“Love is an open door” is a phrase that’s been talked about a lot leading up to this production, as it is a key theme in Frozen, and as the play progresses we watch this theme evolve from innocence into experience.

This theme is introduced early in the first act and reflects Anna’s idealistic and naive view of love. Love is indeed an open door as she commits to an immature infatuation, casting reason and caution aside, and quickly falling in love with Prince Hans.

We next see evidence of “Love is an open door” in Anna’s relationship with Kristoff. We witness as she steadily experiences a more enduring and abiding affection for Kristoff, in large part, because its development is more sustained. The love Anna feels for him comes on much more slowly—almost imperceptibly so—therefore, its effects are deeper and more lasting.

We see the profound power of “Love is an Open Door” through Anna’s relationships with other characters. People who are different, struggling, and may not even be comfortable in their own skin. It is here we see love flourish between Anna and such characters as Olaf, Sven, and the Hidden Folk. It is a love nurtured by her ability to accept and care for everyone, regardless of their appearance or nature.

“Love is an Open Door” takes a dark turn when it’s revealed that Hans is not as genuine as Anna believed, and we are led to believe that Anna may be destroyed by her commitment to the simplicity and the innocence of “Love is an Open Door.”

Through it all, however, Anna demonstrates an unwavering commitment, and a pure love, especially for her sister Elsa. Anna’s journey to find Elsa and save the kingdom, a journey rooted in selflessness and sacrifice, leads her to discover the true meaning of “Love is an Open Door.” Anna’s resilience and her ability to see the best in her sister and in others, her hopefulness in the face of adversity, her strength and singularity of purpose, and her willingness to forgive demonstrate the power in always allowing love to be an open door.

Thank you for coming to the show. We hope you enjoy watching it as much as we have enjoyed preparing it!

**JOHN BROWN**

Director

# ❄️ Act One ❄️

## Opening

"VUELIE" _____	Company
"LET THE SUN SHINE ON" _____	Young Elsa, Young Anna, King, Queen, Townspeople
"A LITTLE BIT OF YOU" _____	Young Elsa, Young Anna
"HIDDEN FOLK" _____	Queen, Pabbie, Young Elsa, King, Company
"DO YOU WANT TO BUILD A SNOWMAN?" _____	Young Anna, Anna, Elsa
"FOR THE FIRST TIME IN FOREVER" _____	Anna, Elsa, Townspeople
"HANS OF THE SOUTHERN ISLES" _____	Hans
"DANGEROUS TO DREAM" _____	Elsa, Townspeople
"LOVE IS AN OPEN DOOR" _____	Anna, Hans
"REINDEER(S) ARE BETTER THAN PEOPLE" _____	Kristoff
"WHAT DO YOU KNOW ABOUT LOVE?" _____	Anna, Kristoff
"IN SUMMER" _____	Olaf
"HANS OF THE SOUTHERN ISLES" (REPRISE) _____	Hans, Weselton, Townspeople
"LET IT GO" _____	Elsa

# ❄️ Act Two ❄️

## Entr'acte

"HYGEE" _____	Oaken, Kristoff, Anna, Olaf, Family & Friends
"FOR THE FIRST TIME IN FOREVER" (REPRISE) _____	Anna, Elsa
"FIXER UPPER" _____	Bulda, Pabbie, Olaf, Hidden Folk
"KRISTOFF LULLABY" _____	Kristoff
"MONSTER" _____	Elsa, Hans, Men
"TRUE LOVE" _____	Anna
"COLDER BY THE MINUTE" _____	Anna, Kristoff, Elsa, Hans, Townspeople
"FINALE" _____	Company



THERE WILL BE ONE 15-MINUTE INTERMISSION

# ❄️ The Story ❄️



"Frozen: The Broadway Musical" closely follows the storyline of the 2013 Disney animated film "Frozen" but expands and enhances certain elements to suit the theatrical medium.

The musical begins with a young Elsa and Anna playing together in the castle of Arendelle. During their play, Elsa accidentally injures Anna with her magical ice powers. In an effort to protect her sister, Elsa's parents, the King and Queen, seek help from the magical trolls. To erase Anna's memories of Elsa's powers, the trolls remove all knowledge of Elsa's magic, but caution Elsa to learn to control her abilities.

As the sisters grow older, Elsa's powers become harder to conceal. On the day of Elsa's coronation as queen, her emotions erupt, revealing her ice powers to the kingdom. Misunderstood and fearing for her sister's safety, Elsa flees to the mountains, inadvertently plunging Arendelle into an eternal winter.

Anna, determined to bring back summer and reconcile with her sister, embarks on a perilous journey. Along the way, she is joined by an ice harvester named Kristoff, his loyal reindeer Sven, and an enchanted snowman named Olaf. Together, they face challenges, encounter magical creatures, and discover the truth about Elsa's powers.

Elsa, struggling with her powers and the fear of hurting those she loves, inadvertently plunges Arendelle into eternal winter. Anna, realizing the depth of Elsa's isolation, works to bring her sister back and mend the fractured bond between them.

The Broadway adaptation introduces new songs and characters, adding depth to the emotional journey of the two sisters. The grandeur of the stage allows for visually stunning effects, including the creation of Elsa's ice palace and the magic associated with her powers.





# 🌿 Musicians 🌿



## Conductor/Keyboard 2

CHIP BROWN

## French Horn

ELLIOTT BLANCHARD

## Cellos

ZACHARY CHILD, ALLISON WHITT

## Upright/Electric Bass

SEAN JENSON

## Viola

NOAH PULU

## Guitar

ZACH FULLER

## Violins

AERYN HWANG, CASSANDRA BROSVIK  
& JANE HILLMAN

## Keyboard 1

OLIVIA WRIGHT

## Drums

BRYANT BAIRD



**HIVE**  
RESTYLE & DESIGN



We know how to  
update your 'Frozen  
in time' interior:  
Start with a  
Design Session

- 3 HOUR IN HOME DESIGN SESSION WITH AWARD WINNING INTERIOR DESIGNER
- 3 MOOD/DESIGN BOARDS
- 30 MINUTE ZOOM FOLLOW UP

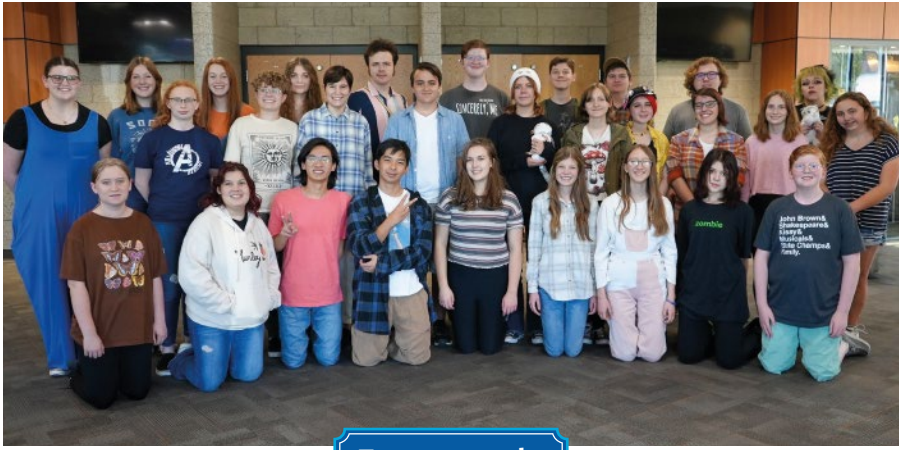
\$550. (-100 off standard price)



HIVErestyle.com 801.369.2262 #hivestyle

Promo Code : FROZEN Ends 12/31/23 Book Design Session 11/2023 -7/2024

# Ensembles



## Townspople

Addison Steed, Alex Hsiao, Amelia Fisher, Arryn Grow, Breanna Moeller, Brigham Nielson, Chloe Shields, Claire Bement, Dexter Jones, Declan Newall, Eli Bagley, Emily Baxter, Emma Allen, Emma Tingey, Evelyn Larsen, Hailey Sorenson, Haley White, Harry Fuller, Ian Noot, Izzy Langston, Jack Bramwell, Jack Warren, Jarom Paskett, Kamri Arkell, Kate Harris, Katherine Hoke, Kenzie Stirling, Larissa Ribeiro, Loa Sing, Lochlan Newall, Lysnie Pulham, Marcelo Fitzgerald, Marshall Barrus, Molly Henriksen, Nellie Bagley, Peyton Warren, Rachel Cottrell, Riley Allen, Seth Dobson



## Coronation Guests / Oaken's Family & Friends

Alex Hsiao, Bailey Cutler, Brooklyn Fielding, Brooklyn Turpin, Cambri Burgon, Dexter Jones, Emma Timmerman, Harry Fuller, Jack Warren, Jarom Paskett, Kate Kendrick, Kayla Bean, Kaylie Pont, Madelyn Markland, Maggie Christiansen, Marcelo Fitzgerald, Marshall Barrus, Michael Jowett, Payten Caldwell, Petra Fuller, Riley Allen, Spencer Tingey, Sydney McGuire

# Ensembles



**Hidden Folk**

Abby Bown, Anna Gooch, Aspen Toro, Avery Douglas, Corinne Braley, Ellie Johnson, Emma Ashby, Grace Harper, Ira Phillips, James Cuellar, James Dodge, Lainie Zollweg, Lily Reeder, Lyla Jo Stanley, Madalyn Freeman, Matisyn Johnson, Michael Watts, Olivia Brown, Paisley Fillmore, Portia Hugh, Rosie Goade, Sophia Groom, Sophie Miskin, Sydney Bair, Tyani Chisholm, Zachary Schaeffer, Zoe Barrus, Zoey Checketts



**Specialty Ensemble**

Allison Brown, AnnaBelle Taylor, Danielle d'Argy, Gwenyth Wilkins, Haley Forsloff, Holly Etringer, Kiana Lee, Kiersten Sneddon, Kiley Randall, Natalie Aldrich, Noah Brown, Olive Uberti, Piper Marchant, Savanna Hull

# 4 HORSEMEN RACING

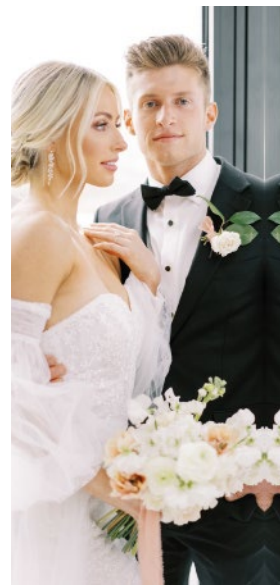


**PROTECT YOUR  
INVESTMENT**

**PAINT PROTECTION FILM  
CUSTOM WRAPS  
CERAMIC COATING  
TINT**

**801.836.6842**

**Mention SKYRIDGE THEATRE  
for a special discount!**



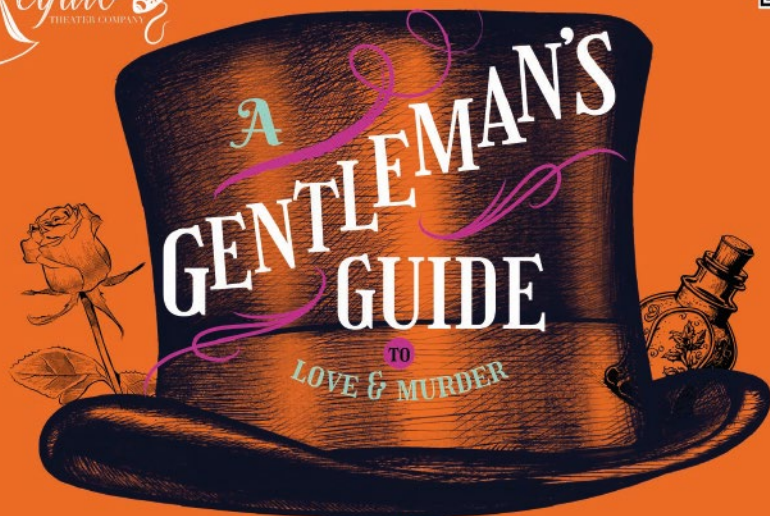
## THE ROOFTOP

WEDDINGS + EVENTS

LEHI, UT | THEROOFTOPLEHI.COM | 801.448.7714



WWW.REGALOTHEATER.COM



**JANUARY 5TH-20TH**

**7:30 PM**

**SKYRIDGE AUDITORIUM**

# Who's Who



**MIA SCHOEBINGER** Anna

Mia is excited to play Anna, one of her dream roles! Her first acting role at Skyridge was Young Eponine in Les Miserables when she was 10 years old. Mia has now been in over 12 productions at Skyridge. Some of her favorites were Little Becky Two Shoes in Urinetown and Rusty in Footloose. She would like to thank her parents for letting her use their walk-in closet as a rehearsal studio. Mia can't wait for all of you to experience the magic of Frozen!

**ELLIE SABIN** Elsa

Ellie is a senior this year and couldn't be more excited to be part of this show. She joined Skyridge Theatre in her freshman year and has participated in many of the school's productions, such as SpongeBob, Footloose, and Matilda. Playing the role of Elsa has been a dream come true for Ellie, and she would like to thank everyone who helped her to get where she is today. She can't wait to take the stage and share this amazing story with all of you, and hopes you come to love it as much as she does.



**KAMILLE ANDERSON** Young Anna

Kamille is a Senior and the youngest of four children. She believes in magic and Santa. She loves Star Wars movies and hopes to marry Spiderman. (The second one, not the third one.) Kamille has been acting, singing and dancing since she could walk and talk. Her favorite roles have been little Kangaroo in Suessical and being in Urinetown. Kamille is kind and loves people, she recently returned from building a school in the Dominican Republic. She plans to sing and dance through college and life. Kamille would like to thank her parents who are her biggest cheerleaders.

**GEORGIA SWIGGER** Young Elsa

Georgia has always enjoyed watching her older sisters perform in Skyridge musicals since the school opened. At 11 years old, she feels fortunate to have an early opportunity to perform on this stage! Georgia loves dancing, tumbling, and singing, and she is thrilled to be part of this incredible cast as Young Elsa.



# Who's Who



**IZZY BROWN** Queen Iduna

Izzy Brown is a Junior at Skyridge High School. She loves to create all forms of art, especially theatre. She has been in 12 shows since the age of six. This includes favorite roles such as: Susie in Bye Bye Birdie at Lehi Arts, Lina Lamont in Singing in the Rain at Viewpoint Middle, and a chimney sweep in Mary Poppins at Hale Theatre. She is thrilled to have this role in frozen and is so excited for her future opportunity's in this program!

**GABE WALTER** Pabbie

Gabe is a senior at Skyridge High school. He has been doing theatre for all three years and has loved every second of it! His favorite role was Rudolpho in Matilda who is an over-the-top, tantalizing, ballroom dancer! Such a blast! Gabe is also currently taking tech at Skyridge and is super stoked to be working up in the booth this year. He would love to thank all of his peers for the amazing amount of support and love he gets and he can't wait to do amazing things with all of them this year.



**MARSHALL BARRUS** King Agnarr

Marshall is a sophomore at Skyridge and is very excited to be a part of this performance of Frozen. This is his second time being a king in this department. He's also been a pirate captain, a president, a huntsman, and a boyfriend. He'd like to thank his family for their constant support, especially his awesome older sister for introducing him to theater.

**MATISYN JOHNSON** Bulda

Matisyn is a senior and has been part of the Skyridge Theatre community all four years. Her first love is theatre, but she also enjoys playing soccer, crafting, singing, and writing song lyrics. Some of Matisyn's favorite moments include competing with her trio in Classical scenes at Region and State, celebrating the team's win at Shakespeare, and creating lasting friendships through laughter and shared experiences on and off the stage. She is grateful to John Brown and Kissy for believing in her and her family and friends for their love and support! She is excited to bring the magic of the Hidden Folk to the stage!



# Who's Who



**JAXON ARBON** Bishop

Jaxon Arbon has been in the performing arts since he was 9 years old. He has been with skyridge for 2 years now and is having the greatest experience in the Theatre program he could possibly have. He is so excited to bring you the character of Bishop and hopes you enjoy the show.

**CALEB SOUTHWICK** Hans

Caleb Southwick is a senior and has been in the theater department at Skyridge for all four years of his high school career. He has done many shows at Skyridge including Urinetown, Matilda, and the Man of La Mancha. Some of his past roles have been Larry the Lobster in Spongebob, Andre in the Father, and Chuck Cranston in Footloose. Caleb is ecstatic to be the first actor to play Hans in Utah and is so grateful to everyone who has supported and helped him along the way.



**OLIVER HUDSON** Weselton

Oliver is incredibly excited to be performing in Frozen! He is stoked to have the opportunity to perform in the first production of Frozen in Utah ever! You may know him from recent Skyridge shows, such as Matilda, Footloose, Urinetown and Spongebob: The Musical. He hopes to kick his senior year off with a bang of a musical!

**ETHAN ETRINGER** Kristoff

Ethan, a Senior, is thrilled to bring this beloved male Disney character to life! This is a definite highlight for his last year at Skyridge. Ethan has been performing in theatre since he was eleven. He has portrayed; "Peter" in Peter and Wendy, "Officer Barrel" in Urinetown, & "Bruce" in Matilda. For 4 years, Ethan has been grateful to work with his Director, John Brown and to make lasting relationships. He is also thankful for his family. BUT...for tonight, remember, "Reindeers are better than People!"



# Who's Who



**TYLER ANDERSON** Sven

Tyler is a senior at Skyridge High School and is so excited to be playing Sven! One of his favorite roles was when he played Perch Perkins in the Skyridge production of Sponge Bob, (literally all about that purple suit)! He has participated in every production since joining Skyridge Drama and is ecstatic to continue this year! He loves drawing and blasting music in his car, and believes that Reindeer are better than people! (It's True)

**CARSON LONG** Olaf

Carson is so excited to play the role of Olaf! He has starred in many Skyridge productions over the years and loves sharing his talents with friends, family and the community. His favorite shows have included Matilda, Spongebob, Man of La Mancha, Sense & Sensibility and Peter/Wendy. When Carson is not performing you can find him enjoying a good movie or eating ice cream! "I'm so grateful for family & friends that have always supported me in my talents and goals!" Some parts are worth melting for ;)



**JAYDEN PONT** Oaken

Jayden is a Senior. And he could not be more excited for this year. On top of his role in Frozen as Oaken, he will be playing Prof. Bhaer in Little Women. Past roles would include Sor John (Sense & Sensibility), The Barber (Man of La Mancha), and his favorite so far, Willard (Footloose). Jayden would like to thank his mom, for putting up with him being gone all the time, but more importantly for supporting him with everything he does. And cheering the loudest for him on stage.



**JOSEPH D'ARGY** Weselton's Guard

Joseph is a junior at Skyridge High School and is at least more than happy to be playing a Weselton Guard! Two of his favorite roles were when he played Guard #1 in the AFCT production of Sweeney Todd, as well as Guard #2 in the Skyridge production of Comedy of Errors! He has participated in three Skyridge productions so far, and can't wait to participate in upcoming theatre projects! He loves playing piano, and likes playing guitar, violin, and harmonica. He thinks that John Brown is the best, and so is his dad!





# Who's Who



**MARK URSIC** Weselton's Guard

Mark is a junior at Skyridge High School. He is a huge fan of the arts and is so excited to be surrounded by all the energy, talent, and creativity of the cast of Frozen! He is so grateful for the new friends he's made and for the positive influence they've been in his life. He wants to give a big thanks to John Brown for taking a chance on him, believing in and seeing the best in him!

**LIESEL CHIPMAN** Handmaiden

Liesel is a junior, or, as her family puts it, 16 going on 42. She's loved theatre, music, and storytelling for her entire life, and has been in both Footloose and Frozen thus far (but look for her in King Arthur next February!). She enjoys reading, writing, watching movies, drawing, and British humour. Liesel would like to thank her immensely wonderful and supportive loved ones for their encouragement. If you've made it this far, remember the mitochondria is the powerhouse of the cell and momento mori.



**LUCY JOHNSON** Handmaiden

Lucy is a senior at Skyridge this year. She moved to Utah last year and is grateful for all the wonderful people she's met since. As a Soprano in the school chamber choir, the Skyridge Singers, she's had a bit of experience on stage, but this will be her first acting role! She's thankful to her family, who have encouraged her in everything she's done this far.



# ❄️ Special Thanks ❄️



Thank you to the faculty and staff of Skyridge High School for working with your students and allowing them to be involved in a production like this. A big thank you to the Skyridge High School administrative team, particularly Jed Francis and John Wallwork. I am grateful for your support, your patience, and your understanding. Thank you to the Alpine School District for nurturing the type of environment where students can create significant works of art. A huge THANK YOU to the parents, family, and friends who were so involved and helpful and, without whom this show never would have been possible.

Thank you to Heather Newall, the maestro of social media, the marketing mastermind, the virtuoso of the front of the house, the wizard behind the curtain, and a dear, dear friend. Thank you to Becky Jones for your innovative and tireless work on concessions, and thank you to Britt Brown for being an integral team member in helping oversee tickets. Thank you to Kat Fuller for your dedication to the program and for the beautiful vision you bring to the Skyridge Theatre clothing. Thank you to Jeff and Jessalyn Batt for your time, support, and willingness to help with video recording and photos--I'm glad you didn't graduate with Kenzie! Thank you to LJ Jones for breathing life into Olaf and Sven and to Crystal Pine for giving Sven form. Thank you to Michael Carrasco, we greatly appreciate your assistance with and invaluable counsel regarding sets and projections and to Regalo Theater for lending items and supplies. Thank you to Erica Schoebinger, your invaluable assistance was instrumental in bringing this show to life. Thank you to Rachel Swogger and Shannon Hudson for helping Ramona with costumes and for your faithful support of her. Thank you to Amy Goade, Chelsey Bean, and Betsy Long for your fantastic work on hair and make-up and those excellent wigs! Thank you to Kissy Richards for your incredible choreography and marvelous music direction. Your creative vision helped shape the heart of our production. Thank you to Jennifer Schoebinger, your pivotal role in set construction and organization has been indispensable. Thank you to Chip Brown, your musical expertise and guidance have been invaluable, and your friendship has been a cherished gift. And last — but certainly not least — thank you to Ramona Brown. Thank you for your beautiful costumes, thank you for encouraging me to leave the law and become a teacher, thank you for your support and patience and love. Thank you, one and all, for telling these stories with me.

**JOHN BROWN**

Director

# ACTOGRAMS & TECHOGRAM

Send a card to  
**any cast  
member!**



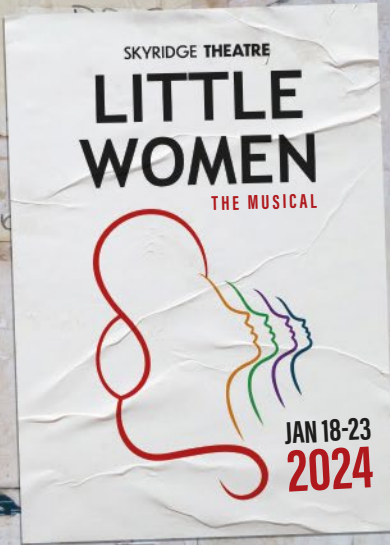
**Just the Card** \$1.00

**Card & Candy** \$3.50

**Card & Flower** \$5.00

**SKYRIDGE THEATRE**

# COMING SOON



**VISIT US AT**

**SKYRIDGETHEATRE.COM**

and follow us at:

 [skyridgetheatre](#)

 [skyridgetheatre](#)

 [skyridgetheatre](#)